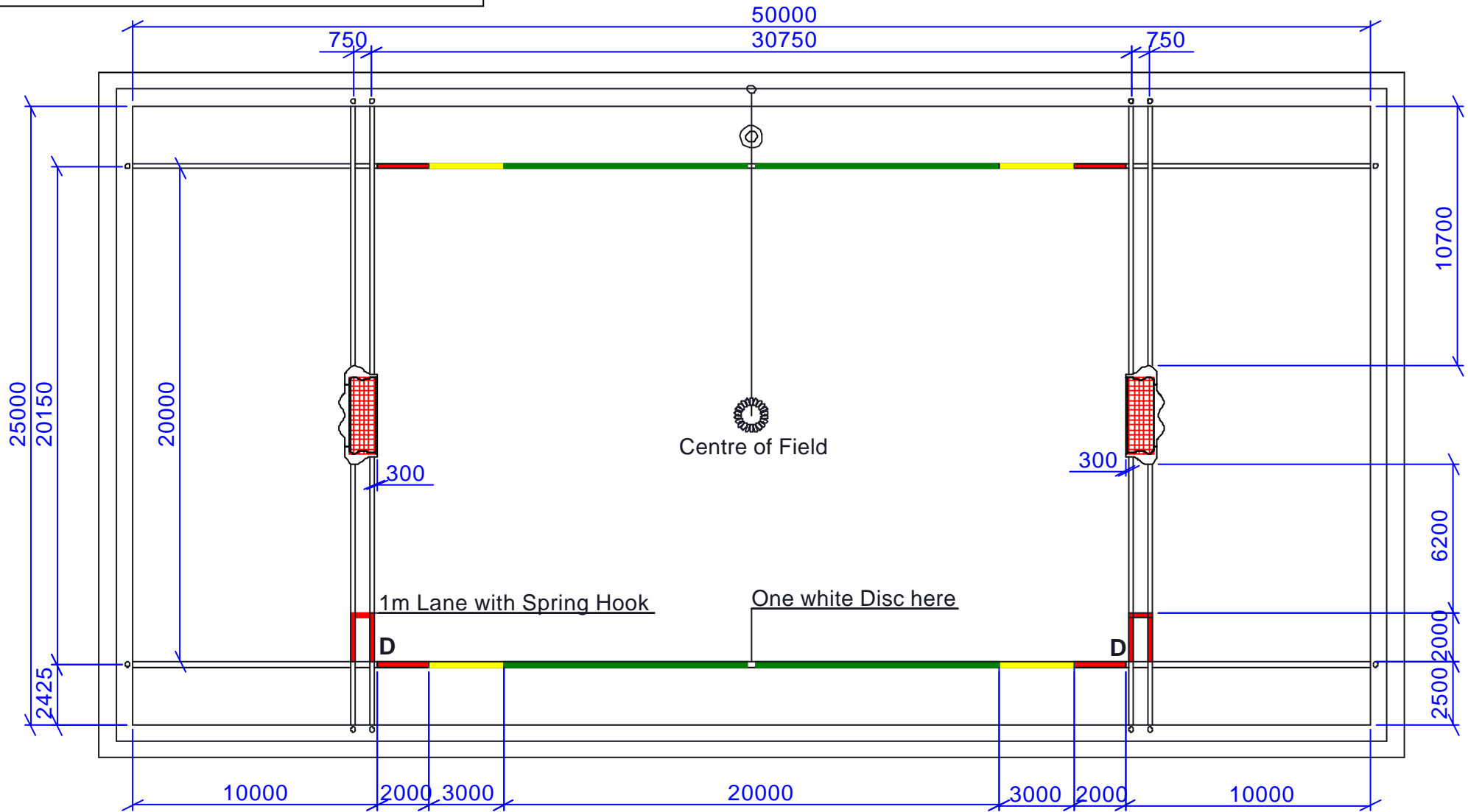


Polo Field Lanes

Open Drawing



Note:

1. The dimension between the Anchors is from centre to centre.
2. The dimension of Polo Field for Men is 30mx20m.

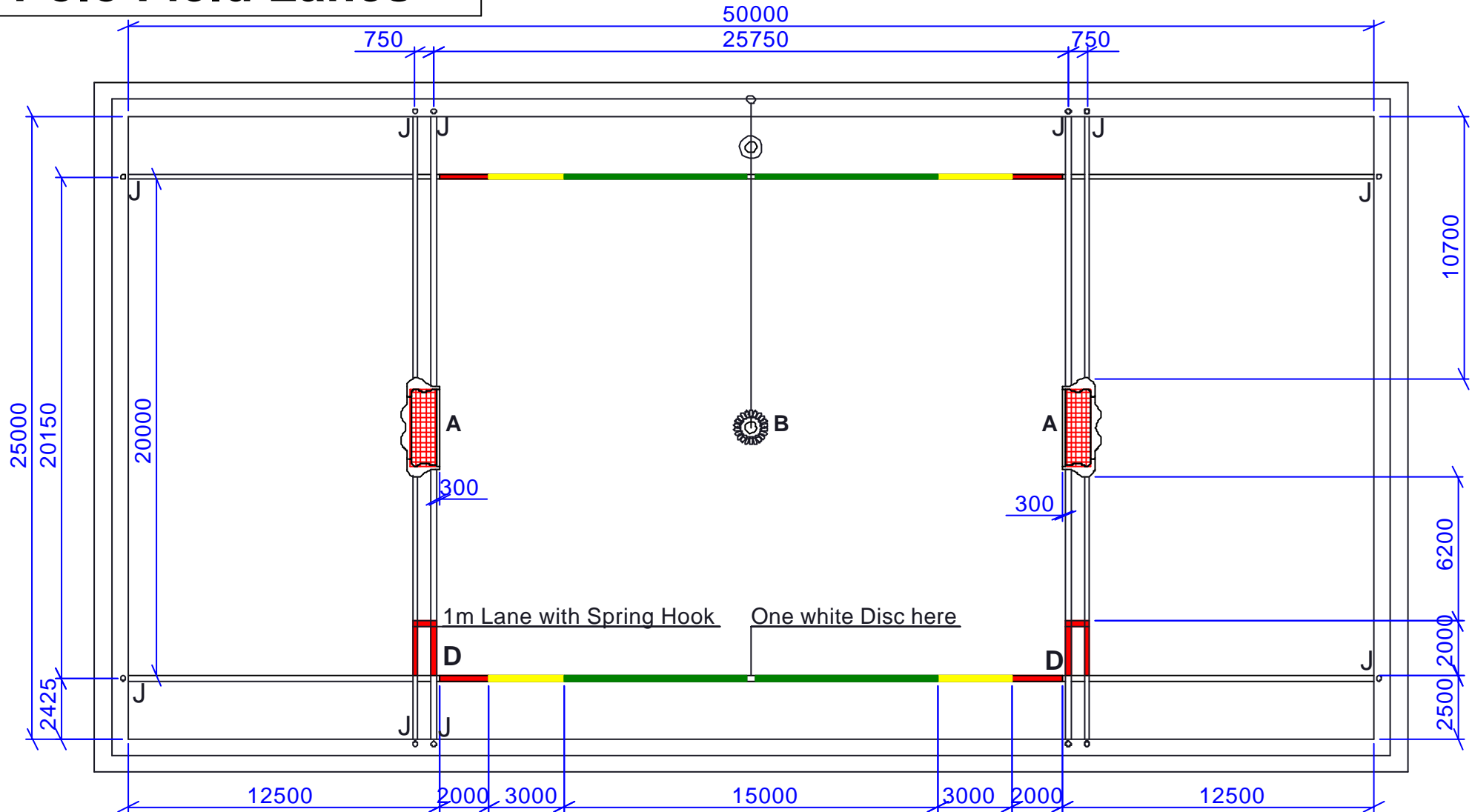


PROPRIETARY AND CONFIDENTIAL
 The information contained in this drawing is the sole property of ANTI WAVE, any reproduction in part or as a whole without the written permission of ANTI WAVE is prohibited.

Project Name:		Product Name:		Project No.	AWE00472	Product No.	01
Polo Field Lanes		Field dimension for Men		Drawn Date	2007-04-26	Verify Date	
Drawn	Philip	Scale	No	Patents	2001285610;7100219;4048677;01818714.5 & 2003/2920 e.g.		

Polo Field Lanes

Open Drawing



Note:

1. The dimension between the Anchors is from centre to centre.
2. The dimension of Polo Field for Women is 25mx20m.



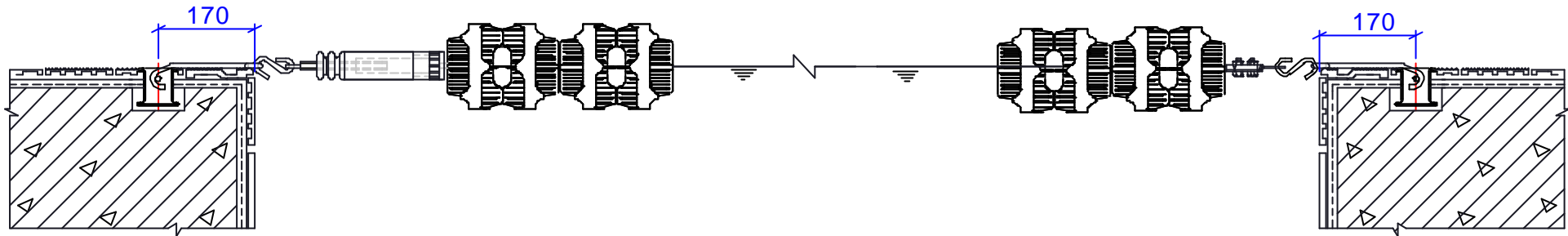
PROPRIETARY AND CONFIDENTIAL
 The information contained in this drawing is the sole property of ANTI WAVE, any reproduction in part or as a whole without the written permission of ANTI WAVE is prohibited.

©ANTI WAVE 2007

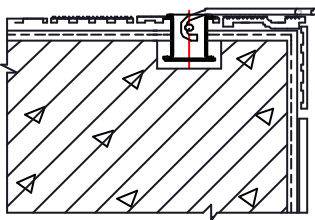
Project Name: Polo Field Lanes				Product Name: Field Dimension for Women		Project No. AWE00472	Product No. 02
Drawn	Philip	Scale	No	Patents	2001285610;7100219;4048677;01818714.5 & 2003/2920 e.g.	Drawn Date 2007-04-26	Verify Date

Polo Field Lanes Assembly Instructions

General Sketch

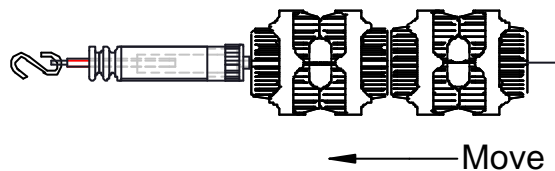


Step 1



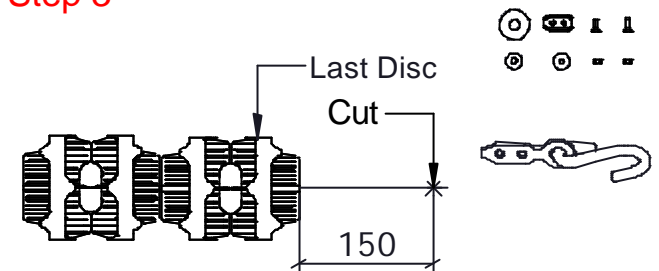
Install Lane Anchors correctly in the Pool Wall and wait one week before stressing them, hitch the Long Hooks to the Lane Anchor when you want to install the Lanes.

Step 2



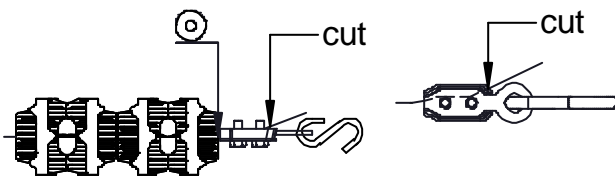
Open the Lane package, take the Super Tensioner's side and move all Discs and Floats to this side tightly.

Step 3



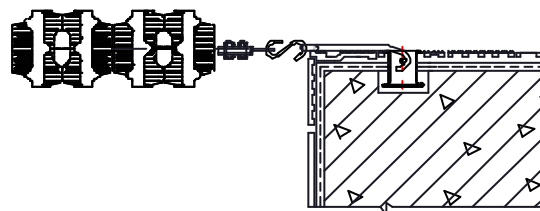
Cut the Stainless Steel Cable as above drawing, then uninstall the Long Clamp.

Step 4



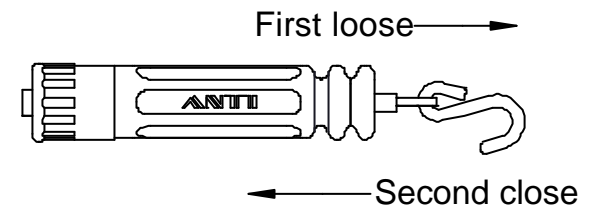
Fix the S Hook to the Stainless Steel Cabel as above drawing, then use the Washers and Nuts to screw them, then cut the extra Cable. Note: do not forget the Washer attached the last Discs.

Step 5



Hitch the S Hooks to the Lane Anchor, then take the Lane to the another side of the pool.

Step 6



Loose the long bolt of Super Tensioner, hitch the S Hooks to the another said of the pool, then close the long bolt, so finished all the Lane's assembly.



PROPRIETARY AND CONFIDENTIAL
The information contained in this drawing is the sole property of ANTI WAVE, any reproduction in part or as a whole without the written permission of ANTI WAVE is prohibited.

Project Name:
Polo Field Lanes
Drawn Philip Scale No

Product Name:
Polo Field Lane Assembly Instruction
Patents 2001285610;7100219;4048677;01818714.5 & 2003/2920 e.g.

Project No.	AWE00472	Product No.	03
Drawn Date	2007-04-16	Verify Date	